



NFT10 Pilot Pro

Product introduction



Introducing the NFT10 Pilot Pro

- Product introduction
- Features
- Accessories
- Applications
- Newland's Android Range
- Market comparison
- AER - Android Enterprise Recommended
- Relevant trend
- Device Management
- Ndevor
- Documents/Resources
- Part number/Item Code



Introduction

NFT10 Pilot Pro

Designed to bridge the gap between a rugged PDA and a sleek and stylish smartphone, the NFT10 Pilot Pro offers businesses a high quality Android™ mobile computer. At 5.7", it's one of the largest durable touchscreens on the market. It features edge to edge screen protection by a metal housing that's designed to withstand high drops and offer reliable performance in all weathers.

The NFT10 Pilot Pro uses an ultra-slim megapixel barcode scanner with left and right scan solutions for comfortable data capture, all housed in a design that matches the look and feel of high-end modern consumer phones.

With Newland's standard warranty, extended warranty options and Ndevor MDM solutions, the NFT10 Pilot Pro has all the style, functionality and support needed for any enterprise

Work smarter,
wherever you are.
You're the pilot.

Pro Series

As Newland users are growing increasingly more confident, now is the right time to add another level to our brand. The NFT10 Pilot Pro is Newlands first in a new line of professional-class Mobile Computers. For applications where more memory, processing power, a high IP rating, additional services, security and software support are all as important as the data capture needs and budget constraints of a project.

AER

One of the core elements of the NFT10 Pro status is the additional AER certification.

Official Android Website:

<https://androidenterprisepartners.withgoogle.com/device/#!/W4w0wXoQDjy0lpOfocxr>

Additional information can be found further on in this presentation.

**Progressive.
Productive.
Professional.**



Features

NFT10 Pilot Pro

A quick run through what stands out.

- GMS-certified Android 9 OS
- AER (Android Enterprise Recommended)
- Tough 5.7" touch screen
- Dual Band WiFi, NFC
- Two 4G sim card slots
- MegaPixel scan engine with white illumination
- High capacity battery, power saving and fast charging
- Optional Vehicle Cradle available
- MDM Ready
- Ultra Stylish look and feel that resembles

Keep reading for more detail.



NEW

Comprehensive data capture.

The NFT10 Pilot Pro can be integrated with a variety of data capture options including Mega Pixel 1D/2D barcode scanning, NFC RFID reading, fingerprint recognition and GPS/Beidou/GLONASS.

Versatile connectivity.

With dual band 802.11 a/b/g/n/ac WiFi and 4G/3G/2G support, the NFT10 Pilot Pro keeps you connected. Further optimizing this, the dual SIM option allows you to use the most suitable provider no matter where you are. It's a match for any leading consumer-brand mobile phone experience.

Powerful performance.

The Android 9.0 operating system helps you get more from your mobile computer. It's intuitive, fast and tailored to you and your choice of software, applications and operational use. A 2.0GHz octa-core processor keeps you running even smoother.



Long Lasting Battery.

The NFT10 Pilot Pro is equipped with a 4800mAh battery. Supplemented by a low-power design, the usage time is significant. The device is so power-efficient that you won't need to change the battery to operate well beyond a standard shift. To top it off, it supports fast-charging via its Type-C port.

Android Enterprise Recommended.

The Pilot Pro is the first Newland unit to be Android Enterprise recommended. Additionally, GMS services are included.

Rugged durability.

The NFT10 Pilot Pro's rugged housing is sealed to IP67 standards for protection against dust and water. It was built to reliably withstand 1.5m drops to concrete.

Biometric Security.

The NFT10 Pilot Pro has fingerprint biometrics for extra security and a faster login. Positioned on the back of the device, the device can be comfortably unlocked with one hand without having to press the front of the screen.



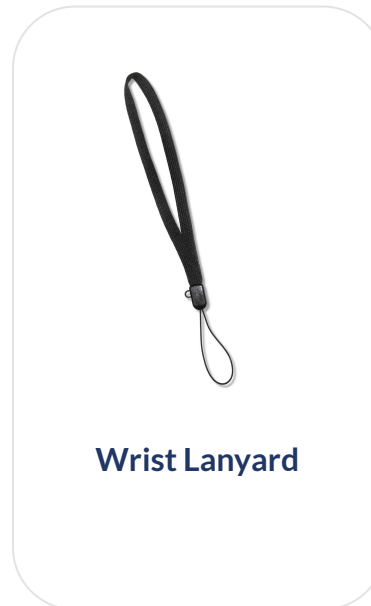
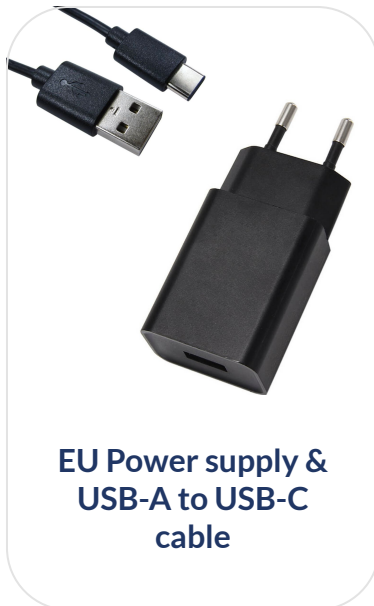
Accessories

Standard & optional

The NFT10 Pilot Pro in design is as close to a personal mobile phone as our industry has gotten so far. As a strategy we have decided to replicate the formula for smartphone supplies of: Device, cable and power supply.

Standard accessories.

In addition to the high capacity sealed battery, the box contains a USB-C cable, wrist lanyard, hard case protector and european PSU.



What's in the box?

- **Hard Case** for additional drop protection
- **Standard power supply**
- **USB-C cable** for fast charging
- **Wrist lanyard** for extra peace of mind

Optional Accessories

Device Cradles



CD1051
Single-slot charging
cradle
standard included



CD1051-4C
4-slot charging
cradle

- **Single-slot charging cradle** with USB-C Port (Charging only)
- **4-slot charging cradle** for charging up to 4 NFT10 Pilot Pro's at the same time

Holsters:



HS115
standard holster



MS105
forklift strap



BT105
belt



NS105
neck strap



PT105
protection flap



RC105
rotating clip



MC105
belt clip

- **HS115** holster for NFT10 Series
 - **BT105** belt for HS115 holster
 - **MC105** belt clip for HS115
 - **MS105** forklift mounting strap for HS115
 - **NS105** neck strap for HS115
 - **PT105** protection flap for HS115
 - **RC105** rotating clip for HS115

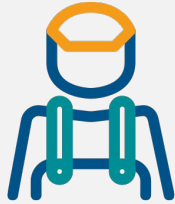


Industries & Applications

Industry suggestions



Ticketing



Field
workforce



Logistics



Retail



Healthcare



Transportation



Hospitality



Postal



Mobile Computers

Newland Portfolio



The NFT10 Pilot Pro takes its place at the top of Newland's mobile computer product range.

When it comes to Newland's Pro series, you will always see a combination of hardware, software and support features that sets it apart. The NFT10 Pilot Pro launches the line and is a prime example of an elite Newland Mobile Computer.

The extra specifications and attention to detail on the design means it sits above the mid-range Orca and Beluga in price as much as power. All while still offering the same excellent opportunity for resellers to make solid profits. Especially when compared to other leading brands' mobile computers.





Market Comparison

Industry alternatives



Zebra TC57



Datalogic
Memor 20



Honeywell CT60

Newlands ambition and main targets to compete with or look to replacement primarily remain; Zebra, Honeywell and Datalogic.

Relative spec-to-price comparisons place the NFT10 Pilot Pro most often against the Memor 20, CT60 and TC7x.

The NFT10 Pilot Pro is on the same hardware level as high-priced enterprise mobile computers like Zebra's TC57, Datalogic's Memor 20 and Honeywell's CT60. Each of these devices are AER (Android Enterprise Recommended) certified but Zebra and Honeywell are installed with Android 8.1. This while the NFT10 Pilot Pro and Memor 20 are already on Android 9.



Zebra TC57



**Datalogic
Memor 20**



Honeywell CT60

The NFT10 Pilot Pro beats the other devices in the following disciplines:

- Highest battery capacity in its class
- Lowest weight: 231g (battery included)
- Best warranty: 2 years
- Thinnest design: 12,6 mm only

Key Selling Points of the NFT10 Pilot Pro:

- Android 9 with GMS. AER
- High battery capacity while still being very light weight
- 2 sim card slots
- New ultra-slim and super fast DE3 Imager built in
- Ndevor MDM included (non-GMS has it on release, for GMS version tba.)
- Firmware Updates included (via Ndevor)



AER

Android Enterprise
Recommended

Android Enterprise Recommended is a validation program from Google that they offer to a selection of devices.

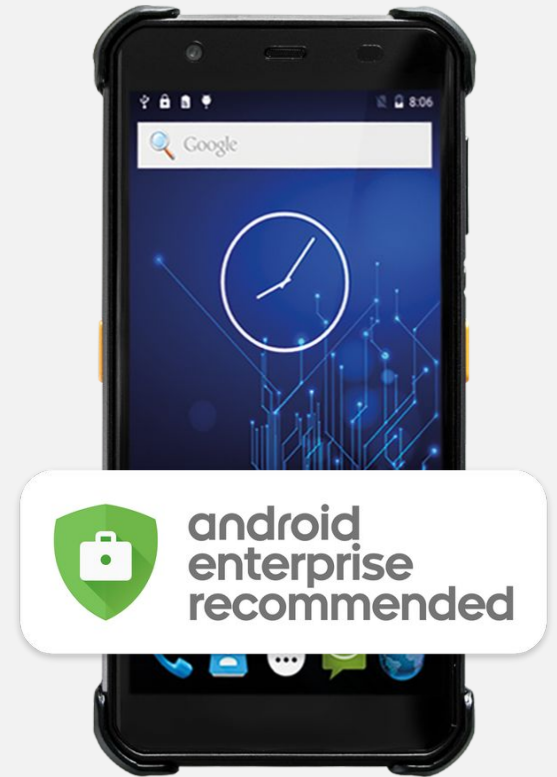
The connected goal is to create a Google recommended device list with hardware that meets a set of enterprise-grade requirements.

Certified Devices, like the NFT10 Pilot Pro, are tested against Google's AER requirement List.

The main minimum requirements are:

- **OS Version:** Android 9
- **RAM / Storage:** 2 GB / 32 GB
- **CPU:** 1,4GHz; 64-bit +
- **Battery Live:** 8h+
- **Enrolment:** Zero-Touch, QR-Code, NFC
- **Security Updates:** Available for 5 years from the launch date of the device
- **Major Update Support:** Support current shipping release + one letter upgrade

The full list of requirements can be found [here](#).

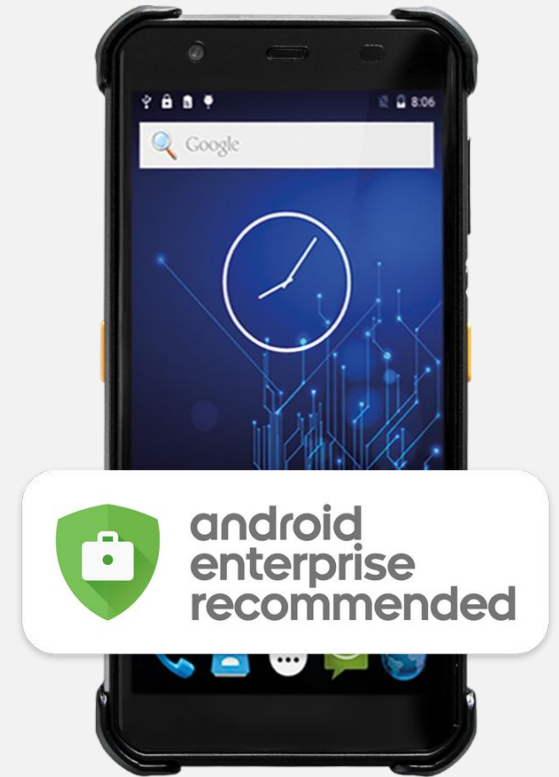


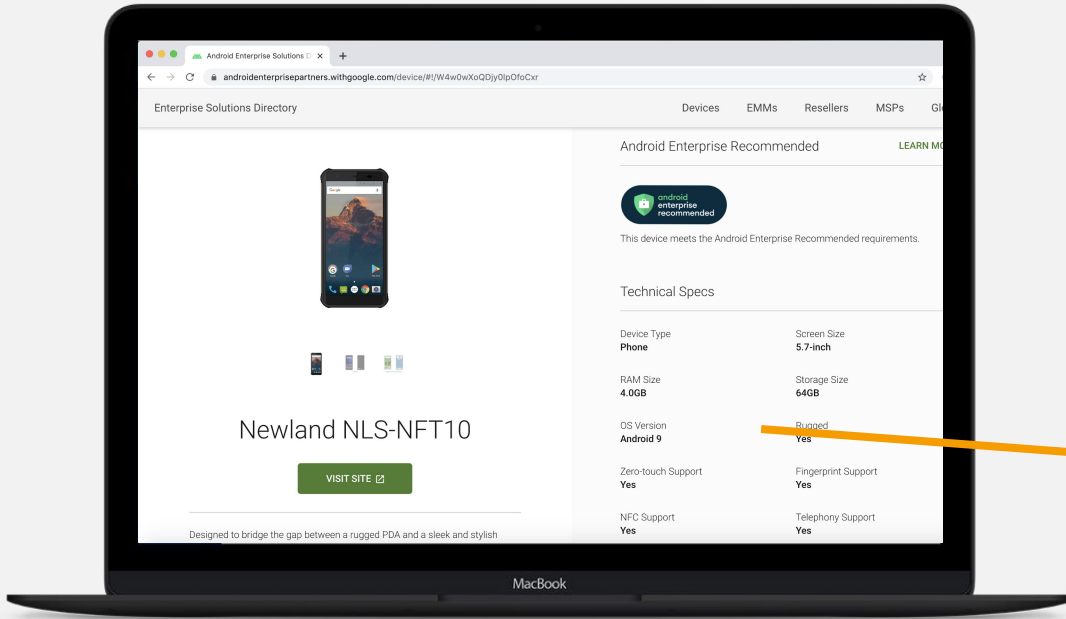
The benefit in settings these standards, is that organisations that are looking at devices for an enterprise use, only have to look for the Android Enterprise Recommended Batch to be sure that their device of choice has been tested against the high-level Google Enterprise requirements.

This makes it easier for organisations that consider buying AER mobile computers to be sure that the device:

- Gets security patches for up to 5 Years
- Can be provisioned as “Fully Managed” for company owned devices or as a “Work profile” to sit alongside a user's personal profile.
- Device meets the demands of today’s enterprise applications
- Android zero-touch is supported

Newland AER certified devices are ready for enterprise solutions!






Newland's NFT 10 Pilot Pro on the Android Enterprise Recommended Webpage.
[link to the page](#)

Android Enterprise Recommended

[LEARN MORE](#)



This device meets the Android Enterprise Recommended requirements.

Technical Specs

<p>Device Type Phone</p> <p>RAM Size 4.0GB</p> <p>OS Version Android 9</p> <p>Zero-touch Support Yes</p> <p>NFC Support Yes</p> <p>Front Camera 2MP fixed focus color camera</p> <p>Battery Life Rechargeable Lithium polymer battery, 4800 mAh</p> <p>Ingress Protection IP67 certified</p>	<p>Screen Size 5.7-inch</p> <p>Storage Size 64GB</p> <p>Rugged Yes</p> <p>Fingerprint Support Yes</p> <p>Telephony Support Yes</p> <p>Rear Camera 13MP autofocus color camera with flash</p> <p>Speed 2.0 GHz Octa-Core 64-bit Processor</p> <p>Drop Test Integrity Multiple 1.22 m drop to concrete at room temperature per Mil_STD 810</p>
--	--



Relevant trend

to the **NFT10 Pilot Pro**

The Internet of Things (IoT) is hot, and that's not surprising. We are surrounded by billions of devices in thousands of locations, like homes, factories, hospitals, cars and more. With the proliferation of devices, you increasingly need solutions to connect them to one another and collect, store, and analyze device data.

So what exactly is the Internet of Things? IoT is a network of interconnected devices that use sensors to collect data and communicate with each other via the internet. 74% of IoT adopters agree that digital transformation is impossible without it.

As consumers are becoming more savvy to connecting their devices, and as enterprise mobile computers evolve in design to appear and feel like consumer devices, it's no surprise that industry runs parallel to consumers when it comes to an appetite for connectivity.



46% of transport and logistics companies are using the IoT to support large-scale business transformation.



53% of healthcare organisations are using the IoT to increase efficiency



90% of retail organisations say they have more live IoT projects than 12 months ago.



82% of adopters in the automotive industry say they are using more IoT connections now than 12 months ago



Android & the Internet of Things

Android provides a suite of applications in their managed service package, that manufacturers are adopting in their devices. With the NFT10 Pilot Pro being as much of a smartphone as any consumer phone, it supports features that the consumer market has gravitated towards and grown familiar with.

MDM & the Internet of Things

However, accessing the most specific layers of information via connectivity is only truly accomplished with MDM software. Keeping the workforces connected to the HQ and each other. Ensuring consistency of application. Reducing the contact needed on each device but increasing the visibility on what those devices are doing, when and where.

The NFT10 Pilot Pro is not only compatible with SOTI, Airwatch and Ivanti Velocity, but is also equipped free-of-charge with Newland's Ndevor. Ndevor is a complementary device management software, designed by and for Newland to fully support our hardware.

Keep reading for more information.



Device Management

NFT10 Pilot Pro

The major MDM platforms link into different operating systems (Android, Linux, MAC, IOS and Windows).

Which MDM is ideal for each business, depends on their operations, used devices, structure, the system they use and of course, their budget. There are various levels of complexity and detail available.

To ensure full coverage of the market, the MT90 Orca II has been designed to enable work in conjunction with all major MDM options across EMEA. It also has full certification on SOTI.

However, where only Newland devices are used, these subscription-based MDM solutions may not be necessary. To further empower Newland users, Ndevor has been developed as a free-of-charge device management tool. It's embedded on non-GMS devices and supplied as a downloadable application on GMS certified devices.

Keep reading for more information.

What device management tools is your NFT10 Pilot Pro compatible with?

- SOTi - Certified
- Airwatch - most functions
- Ivanti Velocity
- **Ndevor by Newland**



Ndevor

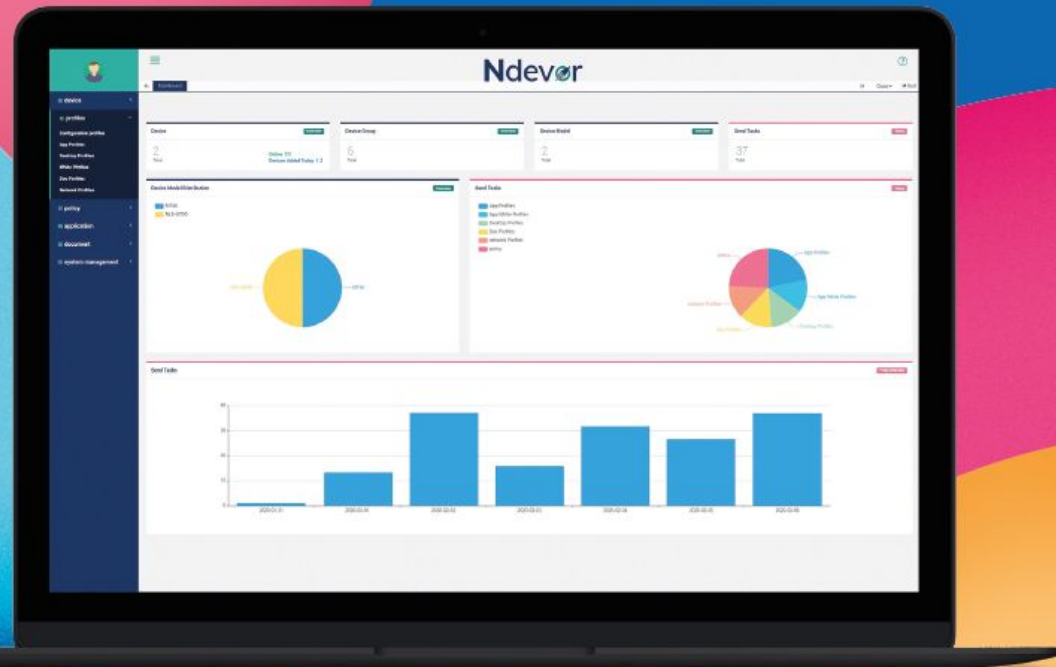
Device Management by Newland

What is Ndevor?

Ndevor is a complementary device management software, designed to fully support our hardware. The Newland tool helps to steer your hardware through its life cycle, from install to upgrade, through maintenance and then seamless migration onto the next generation of devices. Included with your Newland device, Ndevor won't anchor you down like other subscription device management tools.



Ndevor
NEWLAND SOFTWARE



The tool is created and maintained by our in-house Android development team. They knit all the core elements of native Android, together with the unique applications built for Newland devices. Ndevor creates pathways in our operating systems to transport data and instructions to and from the Ndevor platform. This platform is held on a secure server and accessible from any online location in the world with the right security protocols.



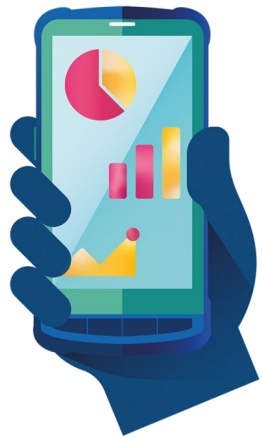
Onboarding.

Enrol devices by a simple point and scan system. QR codes link units to specific groups, defined by purpose or location.



Intelligence.

Instantly get feedback on the stats of your Newland devices. See which and how many of them successfully accepted the profiles you've sent them. Monitor downtime of your devices; filter on time scales, groups or hone in on individuals.



Dashboard.

Intuitive and powerful online tool to build up profiles of applications and settings. Clone the settings to make changes or enrollment plain sailing



Take Command.

Completely control a device, to solve problems or assist users from a remote location. Navigate the entire operating system from a secure log in via desktop or tablet



Security.

Lock down a rogue device or routinely add an extra peace of mind to your entire fleet by setting a secure pin password. Fortify your devices by restricting access to settings, applications and websites.



Radar.

Locate the last known location by pinging a device. Google maps registers each device according to its location va GPS. The standard Ndevor package includes several location pings per month.



User restriction.

Create a streamlined suite of applications to guide the users to access only the right programs on their devices. Whatever management levels your workforce comprises of, they always and only have access to the applications applicable to them.

Ndevor Compatibility list

Ndevor works with popular Newland Android Mobile Computers including the new NFT10 Pilot Pro, MT90 Orca and the MT65 Beluga series, as well as upcoming devices like the N5S Minke and the N7 Cachalot Pro.

Soon, it will work with Micro Kiosks, including the NQuire 350 Skate, NQuire 700 Stingray and the NQuire 1000 Manta.

The NFT10 Non GMS has Ndevor the GMS/AER version will have Ndevor when the new GMS firmware update is available later in the summer.

NFT10 Pilot Pro

MT90 Orca Pro

NQ350 Skate

MT65 Beluga IV

MT90 Orca II

N7 Cachalot Pro

N5S Minke

NQ750 Stingray

NQ1000 Manta

Ndevor by Newland

Ndevor website url

<https://ndevor.net/>

or download the brochure directly

<https://indd.adobe.com/view/95d03eb0-ad95-4c45-9b8a-67e595e7eaec>





Documents & details

NFT10 Pilot Pro

Supporting Material

- Datasheet
- User Manual
- High Res images
- Product Presentation

Find them on [the product page](#).
(online from 13 May)



Newland
SCANNING MADE SIMPLE

NFT10 Pilot Pro
Android mobile computer

FEATURES

Designed to bridge the gap between a rugged PDA and a sleek and stylish smartphone, the NFT10 Pilot Pro offers businesses a high quality Android™ mobile computer. At 5.7", it's one of the largest durable touchscreens on the market. It features edge to edge screen protection by a metal housing that's designed to withstand high drops and offer reliable performance in all weathers.

Comprehensive data capture.
The NFT10 Pilot Pro can be integrated with a variety of data capture options including Mega Pixel 1D/2D barcode scanning, NFC RFID reading, fingerprint recognition and GPS/Belidou/GLONASS.

Long lasting Battery.
The NFT10 Pilot Pro is equipped with a 4800mAh battery, supplemented by a low power design, significantly extending the usage time. It also supports fast charging with a Type C port.

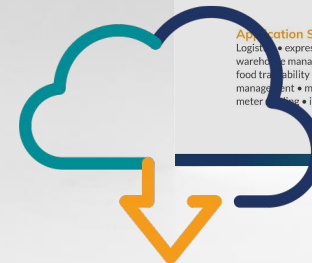
Versatile connectivity.
With dual band 802.11 a/b/g/n/ac WiFi and 2G/3G/4G support, the NFT10 Pilot Pro stays connected. A dual SIM option allows you to use the most suitable provider no matter where you are.

Rugged durability.
The NFT10 Pilot Pro's rugged housing is sealed to IP67 standards for protection against dust and water and withstands 1.5m drops to concrete.

Powerful performance.
The NFT10 Pilot Pro is quick and reliable thanks to the Android 9.0 operating system and a 2.0GHz octa core processor.

Application Scenarios
Logistics • express delivery services • warehouse management • retail chains • food traceability • healthcare • distributor management • manufacturing • electricity meter reading • inventory counting.

All sides of NFT10.



NFT10 Pilot Pro Part numbers

Product Number	Description
NFT10-BHGG-A	NFT10 Pilot Pro Mobile Computer with 5.7" Touch Screen, 2D CMOS imager & BT, Wi-Fi (dual band), 4G, NFC, GPS, Camera. Incl. wrist strap, Hard Case, USB cable and EU Adapter. OS: Android 9
NFT10-BHGG-B	NFT10 Pilot Pro Mobile Computer with 5.7" Touch Screen, 2D CMOS imager & BT, Wi-Fi (dual band), 4G, NFC, GPS, Camera. Incl. wrist strap, Hard case, USB cable and EU Adapter. OS: Android 9 GMS (AER)

NFT10 Pilot Pro Accessories - Charging and Communication – Part numbers

Product Number	Description
CD1051	Cradle for NFT10 series Charging Only. Incl. USB charging cable
CD1051-4C	4-slot Cradle for NFT10 series Charging Only. Incl. adapter with UK & EU power plug

NFT10 Pilot Pro Accessories - Ergonomic – Part numbers

Product Number	Description
HS115	Holster for NFT10
BT105	Belt for HS115 holster
MS105	Forklift mounting strap for HS115
NS105	Neck strap for HS115
MC105	Metal clip for HS115
PT105	Protection flap for HS115
RC105	Rotating clip for HS115



Thank you
for your
attention